

# ▶ Polycom® Practitioner Cart™ HDX Solutions

Providing Mobile Solutions for  
Healthcare Professionals

Polycom Practitioner Cart mobile healthcare solutions bring high definition video, audio and image sharing to medical professionals and patients no matter where they are located.

## Mobile Solutions Expand Your Reach

The ability to bring high definition Telehealth technology to the patient point of care is more important than ever in today's dynamic healthcare environment. The Polycom Practitioner Cart enables medical professionals to provide patients access to care regardless of time or distance constraints. Medical and non-medical peripheral devices can be easily connected to the telepresence system to allow high definition, real time images to be shared, for example, images of a patient's throat, ears or skin. All standards based medical peripheral devices are interoperable so the practitioner cart is ideal for broadcasting medical procedures for education or telementoring.

Polycom also has the unique ability to run in-band stethoscopes which provides unparalleled quality for auscultation of heart and lung sounds in real time, while still giving the clinician the ability to view the patient.

The Polycom Practitioner Cart is specifically designed to meet the needs of mobile Telehealth applications. The carts' small footprint is designed around a durable, enclosed cart frame that is easy to clean, protects internal electronics and computer from spills, and provides the ultimate in maneuverability and flexibility.

## Usage environments

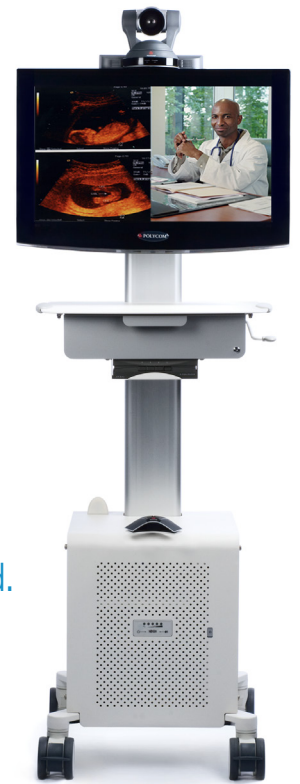
- Hospitals
- Community Health Centers
- Remote Clinics
- Physicians' Offices
- Emergency Rooms
- Intensive Care Units
- Outpatient Mental Health Centers
- University Medical Centers
- Skilled Nursing Facilities
- Prisons and Jails

## Key Applications

- Stroke / Neurology
- Psychiatry / Mental Health
- Primary Care
- Dermatology
- Intensive Care
- Orthopedics / Surgical Follow-ups
- Cardiology
- Pulmonology
- Emergency / Trauma
- Telementoring
- Sign and Spoken Translation Services

## Find Out More.

Learn what the Polycom Practitioner Cart can do for your organization. Visit us at [www.polycom.com](http://www.polycom.com) or contact your Polycom representative.



## Benefits

- ▶ High Definition 720p 30/60 fps or 1080p resolution for life-like experience
- ▶ Platform support for customer IT needs (laptop/PC)
- ▶ Highly mobile, small footprint with enclosed technology compartment for security and spill protection
- ▶ AES encryption for HIPAA compliancy; power system UL 60601 compliant for use in patient care environments
- ▶ Provisioned for wireless with battery power and wireless antenna
- ▶ Easy addition of medical peripheral devices with integrated switch box and connection panel (digital in-band stethoscopes and video scopes)
- ▶ Height adjustable to maintain eye contact

# ► Polycom Practitioner Cart™ HDX Solutions Specifications

The Polycom Practitioner Cart transforms a roomful of technology into a simple, mobile workstation that sits at the head of a table or fits comfortably in an exam room.

## Display

- 26" LCD with integrated speakers

## Video Standards & Protocols

- H.264
- H.263++
- H.261
- H.239 / Polycom People+Content™
- H.263 and H.264 Video Error Concealment

## People Video Resolution

- 720p, 30fps from 832 Kbps
- 720p, 60fps from 1.2 Mbps
- 1080p, 30fps from 1.7 Mbps
- 4SIF (704 x 480)/4CIF (704 x 576) at 256 Kbps–784 Kbps
- SIF (352 x 240), CIF (352 x 288)
- QSIF (176 x 120), QCIF (176 x 144)
- HD Continuous Presence Multipoint

## Content Video Resolution

- Up to 720p
- Input: WSXGA+ (1680x1050), SXGA (1280x1024), HD (1280x720) XGA (1024 x 768), SVGA (800 x 600), VGA (640 x 480)
- Output: 720p (1280x720), 1080 (1920x1080), XGA (1024x768), SVGA (800x600)

## Audio Standards & Protocols

- Polycom StereoSurround™
- 22kHz bandwidth with Polycom Siren™ 22
- 14kHz bandwidth with Polycom Siren 14, G.722.1 Annex C
- 7 kHz bandwidth with G.722, G.722.1
- 3.4 kHz bandwidth with G.711, G.728, G.729A
- Automatic Gain Control
- Automatic Noise Suppression
- Instant Adaptation Echo Cancellation
- Audio Error Concealment
- Keyboard Noise Reduction

## Other ITU-Supported Standards

- H.221 communications
- H.224/H.281 far-end camera control
- H.323 Annex Q far-end camera control
- H.225, H.245, H.241, H.331
- H.239 dual stream
- H.231 in multipoint calls
- H.243 chair control
- H.460 NAT/firewall traversal
- BONDING, Mode 1

## Computer Provision

- Supports customer supplied laptop or ultra small form-factor PC

## Wireless LAN Provision

- Pre-installed unidirectional wireless Ethernet antenna with R-SMA connector (ready for customer supplied antenna cable and bridge)

## Maneuverability

- 4" Twin wheel precision bearing casters (front locking)

## Height Adjustability

- 12" Height Adjustability (work-surface group includes display, camera and work-surface) from floor:
  - Work surface: 32"—44"
  - Camera: 60.4"—72.4"

## Cart Construction

- Compact work surface
- Light weight aluminum and steel construction
- Easy to clean, powder coated finish
- Padded rear handle

## Storage

- Lockable drawer Located under work surface: 3.5" x 15" x 12" (H/W/D)
- Accessory bin located on rear of cart
- Accessory hook on rear of cart for hanging customer supplies/scopes

## Dimensions & Weight

Footprint dimensions

- Width: 20.8"
- Depth: 22.2"

Overall dimensions

- Width: 22.7"
- Depth: 26.3" (including handle)
- Height: 66" to top of camera bracket (72" to top of camera)

Cart Weight

- Shipping weight 170 lbs.
- Cart weight 150 lbs.

## I/O Connections

Rear connection panel

- (2) RJ-45 for LAN (Codec and PC)
- (1) VGA for Laptop Input
- (1) DB9 RS-232

## S-Video Switch

- (4) Position Manual switch



## Power System

- Meets UL60601 leakage current specifications
- Automatic transfer switch

## Battery Power System

- 52 Ah sealed lead acid battery provides up to 2.5 hours of continuous, uninterrupted call time
- Central on/off switch with visible battery power gauge

## Operating Environments

- Operating temperature: 10°C to +32°C
- Humidity – Operating: 10% to 80% non-condensing

## Regulatory

- FCC
- Industry Canada
- NRTL (C and US)
- CE
- C-Tick

## Polycom Worldwide Headquarters

4750 Willow Road, Pleasanton, CA 94588  
1.800.POLYCOM or +1.925.924.6000  
[www.polycom.com](http://www.polycom.com)

