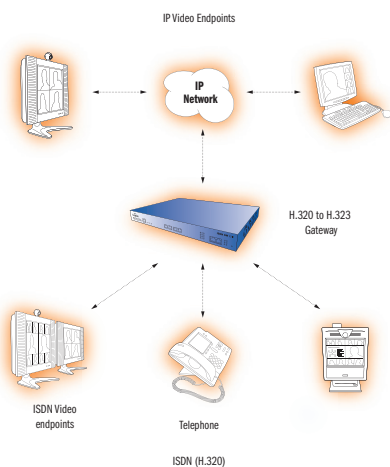




TANDBERG Codian ISDN GW 3201 Series

A high-capacity and scalable gateway that grows with your business demands. Provides seamless integration between IP and ISDN networks with complete feature transparency, including high definition(HD), enabling organizations using ISDN to enjoy the benefits of HD videoconferencing.



DESIGN FEATURES

- Standards-based and compatible with all major vendors' endpoints
- Pay as you grow — buy the capacity you need now and a simple license upgrade in the future
- Easily configurable unit
- Comprehensive remote Web management
- Compact size: 1U tall and 19" rack mountable

APPLICATION FEATURES

- Provides seamless integration between IP and ISDN devices
- Fully integrated, with built-in gatekeeper
- Powerful dial plans ensure that your calls get routed efficiently
- H.239 for presentation sharing capabilities
- Support for automatic load balancing in multiple gateway environments

PERFORMANCE FEATURES

- Video resolutions up to High Definition 720p at 30fps
- Supports up to 4 PRI ISDN ports in a single unit
- Up to 120 voice calls at 64 Kbps
- Up to 60 video calls at 128Kbps
- Bandwidth per call from 56Kbps to 2Mbps
- AES encryption

GET THE MOST FROM YOUR INVESTMENT. WITH **PROFESSIONAL SERVICES**, TANDBERG EXPERTS SUPPORT TANDBERG CODIAN ISDN GW 3201 SERIES DEPLOYMENT AND TRAINING. VISIT WWW.TANDBERG.COM

MODEL	T1/E1 ISDN	MAXIMUM VIDEO CALLS	MAXIMUM VIDEO CALLS	MAXIMUM VOICE CALLS
	PRI INTERFACES	384 KBPS	768 KBPS	64 KBPS
		T1/E1	T1/E1	T1/E1
ISDN GW 3241	Up to 4 PRI's, 1 enabled	15/20	7/10	92/120
ISDN GW 3241-PL		1 additional PRI port license		

ENDPOINTS SUPPORTED

H.323 IP voice and video endpoints
H.320 ISDN voice and video endpoints
PSTN audio only calls (telephones) through ISDN

VIDEO STANDARDS

H.261, H.263, H.263+, H.264

VIDEO RESOLUTION

QCIF, QSIF, CIF, SIF, iCIF, iSIF, 288p, 384p, 400p, 448p, VGA, 4CIF, 4SIF, 480p, SVGA, 576p, XGA, 720p

FRAME RATES

Up to 30 frames per second and 60 fields per second

AUDIO STANDARDS

G.711, G.722, G.728, Polycom® Siren14™, G.722.1 Annex C

OTHER STANDARDS

H.323, H.320, H.233, H.234, H.235 (AES), H.239 (dual video), H.221, FTP, RTP, HTTP, HTTPS, DHCP, SNMP, NTP

ISDN SIGNALLING

Q.931, NFAS, 4ESS, DMS100 support

ISDN BONDING

BONDING (ISO 13871)
H.221 aggregation
Automatic downspeeding on loss of ISDN B channels

BANDWIDTH

H.320/H.323 calls supported up to 2 Mbps
Total bandwidth and number of sites supported is limited only by ISDN capacity

PRESENTATION/DATA COLLABORATION

Data from H.239 (dual video) capable endpoints

CALL ROUTING FROM ISDN (H.320/PSTN)

IVR/auto attendant
Direct Inward Dialing (DID)
Default (Operator) extension
Call routing to MCU/multipoint conference bridge
Digit manipulation
Flexible dial plan
TCS-4 support

CALL ROUTING FROM IP (H.323)

IVR/auto attendant
Dial by E.164 address
Digit manipulation
Flexible dial plan
Dial from MCU with and without a gatekeeper

EMBEDDED WEB SERVER

Complete configuration, control and monitoring of the system

BUILT-IN GATEKEEPER

Resolution of E.164 numbers
Registration of endpoints and gateways
Up to 25 devices can register

SYSTEM MANAGEMENT

Management via embedded Web server
Status through TANDBERG Management Suite (TMS)
XML API
RS-232 for local control and diagnostics
Syslog for diagnostics
Configurable event logs and full H.323 decoding
Configuration backup to network
Secure upgrades through Ethernet or CompactFlash
Call Detail Records downloadable as XML
SNMP

QUALITY OF SERVICE

Configurable DSCP or TOS/IP precedence
H.323 flow control
Dynamic jitter buffers

SECURITY FEATURES

Administrator, User and Guest passwords
Secure management via HTTPS
Dialplan system controls which destinations are reachable
Services may be disabled: HTTP, HTTPS, FTP, H.323, SNMP, H.323 GK
H.235 authentication for Gatekeeper registration
Secure non-PC hardware and operating system

EMBEDDED ENCRYPTION

Standards based on ISDN, IP and mixed ISDN/IP: H.233, H.234, H.235, AES 128 bit key
Automatic key generation and exchange
Transparent encryption

INTERFACES

RJ45 ISDN PRI ports
RJ45 Ethernet, 10/100/1000 Mbps full/half duplex, manual or auto sensing
RJ45 serial port
CompactFlash socket
Up to 27 status LEDs

ENVIRONMENTAL DATA

Operating temperature 0°C to 35°C ambient
Relative humidity below 95% (non-condensing)

PHYSICAL DIMENSIONS

Height 1.73"; 44 mm (1U)
Width 17.2"; 437 mm
Depth 12.3"; 312 mm
Weight 9 lbs, 4kg
19" rack mountable (kit supplied) or standalone
Power 100-240 VAC, 50/60Hz
110W max power consumption

APPROVALS AND COMPLIANCE

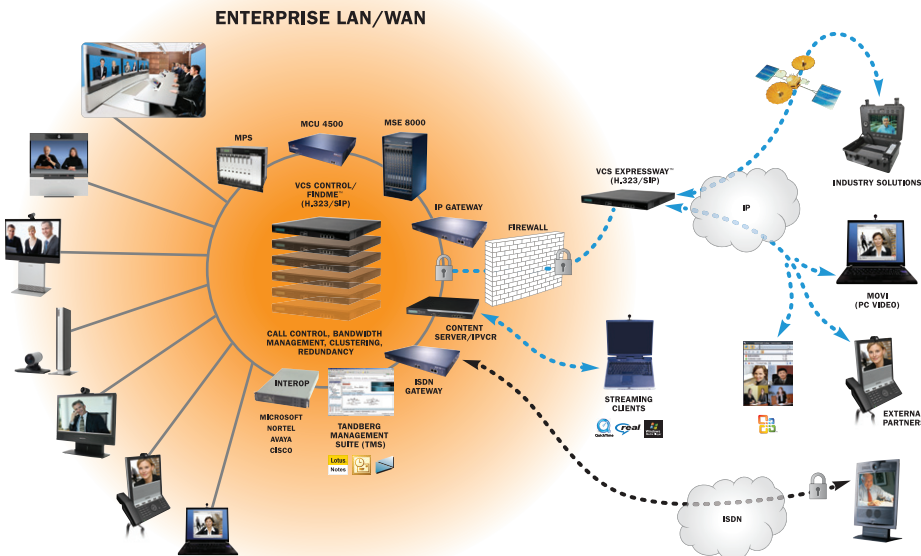
European safety: EN 60950-1:2001
USA safety: UL 60950-1 First Edition
Canada safety: CSA 60950-1-03
CE Marked
EMC:
EN55022 class A,
EN61000-3-2, EN61000-3-3
EN55024: EN61000-4-2,-3,-4,-5,-6,-11,
FCC Part 15 class A,
VCCI class A,
AS/NZS 3548 (C-Tick),
CCC Approved: GB4943-2001, GB9254-1998,
YD/T993-1998
Telecoms:
USA TIA-968-A: October 2002, 47 CFR Part 68: October 2004,
Canada: IC CS-03, Issue 9, Part VI,
Europe: ETS 300 046-3,
Japan: Ordinance of MPT No 31, 1984,
China: NAL Certificate
RoHS compliant

All specifications subject to change without notice, system specifics may vary.

All images in these materials are for representational purposes only, actual products may differ.

TANDBERG and Codian are registered trademarks or trademarks of TANDBERG in the U.S. and other countries.

All other trademarks are property of their respective owners.



TANDBERG

**Codian ISDN
GW 3201 Series**